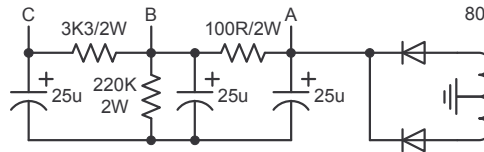


Cascade preamp will run fine with common preamp & PI power node C with good lead dress, option to provide extra filtering of power node D as per original Pushy Croaker schematic

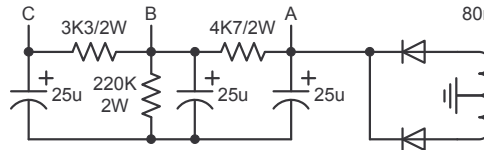
255V B+ Option

190-0-190V
80mA



305V B+ Option

225-0-225V
80mA



Common 270R power cathode resistor option, or use separate 500R as per original Pushy Croaker schematic.

Pushy Croaker Cascade Preamp Option

Drawn by Craig (katopan)
Refer to original Pushy Croaker schematic for other power supply details